

abbotFox

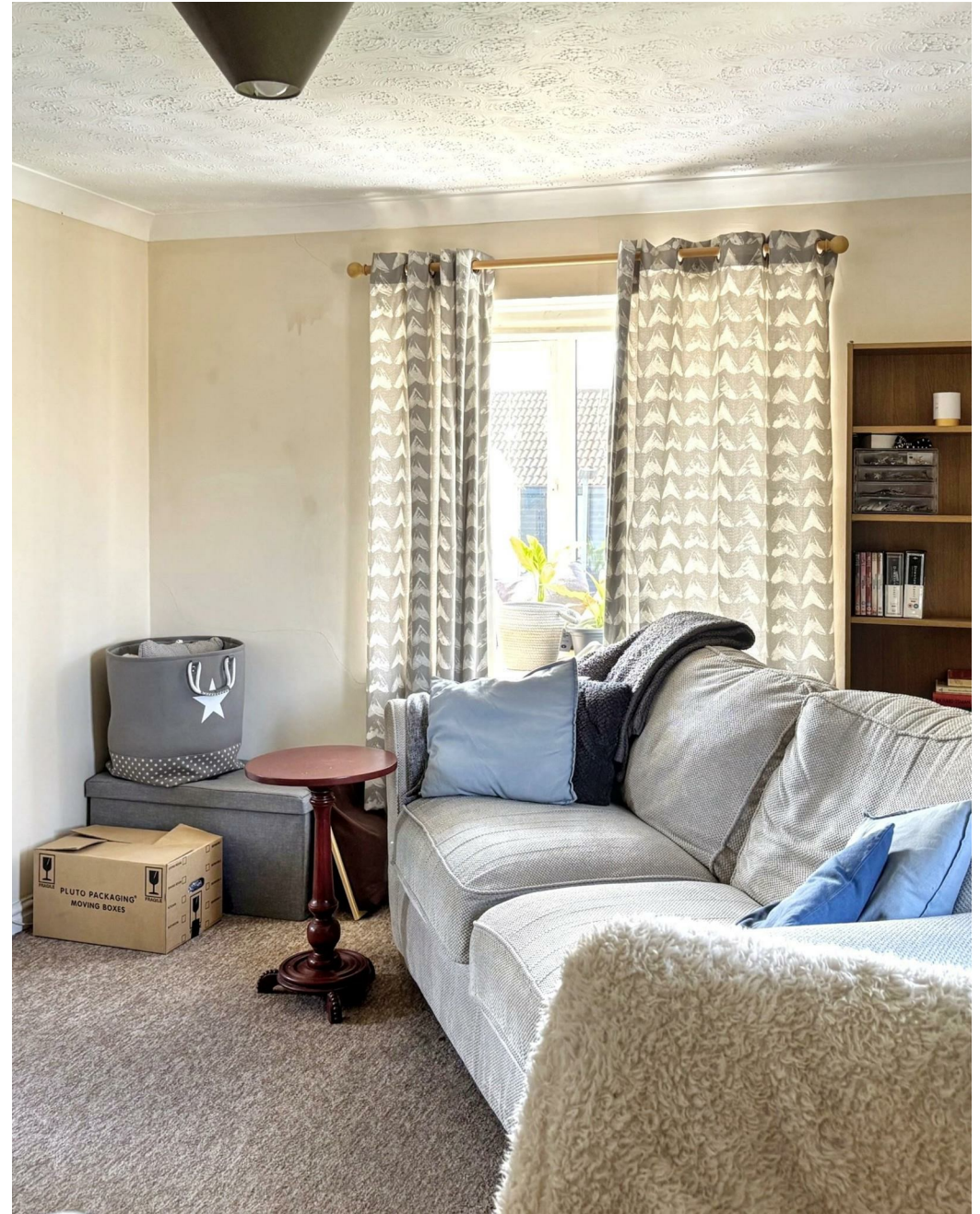


Weston Road, Norwich  
Guide Price £110,000

“

We are a team of genuine individuals who hold a deep passion for both property and marketing. Collectively, we bring over 70 years of experience in the property market of Norfolk and Suffolk. Our affection for both counties runs deep, and we are enthusiastic about sharing our passion with you.

Colin McKenzie | **Branch Partner**







## THE DETAIL \_\_\_\_\_

abbotFox presents this well-proportioned top-floor apartment, perfectly suited to first-time buyers or investors. Set within a sought-after residential location, this home offers a generous double bedroom, a bright lounge, and a fitted kitchen. The elevated position ensures a sense of privacy, while large windows create a light and airy feel throughout. The property also benefit from allocated parking, with local amenities and excellent transport links close by.

Guide price £110,000 - £120,000

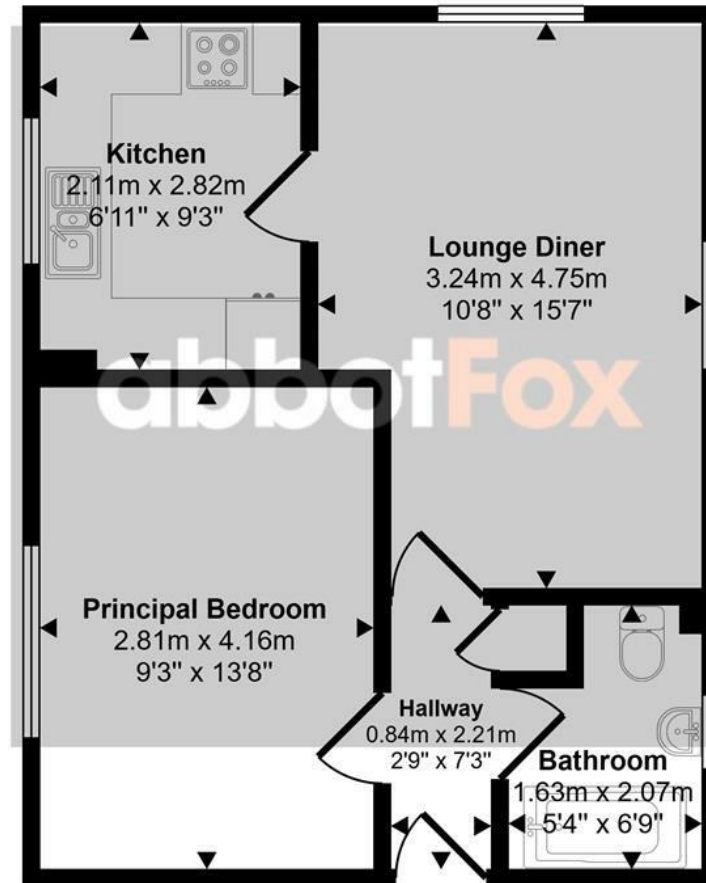




## THE HIGHLIGHTS \_\_\_\_\_

- Top floor apartment
- Generous living accommodation
- Double bedroom
- Allocated parking
- Ideal first time buy or investment
- Viewing advised

Approx Gross Internal Area  
39 sq m / 420 sq ft



Floorplan

This floorplan is only for illustrative purposes and is not to scale. Measurements of rooms, doors, windows, and any items are approximate and no responsibility is taken for any error, omission or mis-statement. Icons of items such as bathroom suites are representations only and may not look like the real items. Made with Made Snappy 360.

*Let's talk*

01603 660000

sales@abbotfox.co.uk

@abbotfox

EPC RATING -

Disclaimer – In accordance with the Property Misdescriptions Act, the company abbotFox gives notice that all descriptions, references to condition, necessary permissions for use and other details are given in good faith and believed to be correct, but any purchaser should not rely on them as statements of fact, and must satisfy themselves by inspection or other means, as to their accuracy.